

RECOMMENDED PCB LAYOUT  
GENERAL TOLERANCES: ±0.05

REV:	ECN. NO.	NAME	DATE

NOTES:

- MATERIAL:
  - HOUSING: LCP UL94V-0; COLOR: BLACK
  - TERMINAL: C2680
  - SHELL: SUS304
- FINISH:
  - TERMINAL: G/F PLATED ON CONTACT AREA; MATTE TIN 100u" PLATED ON SOLDER AREA; Ni 50u" MIN. UNDERPLATED OVERALL.
  - SHELL: Ni 50u" MIN. UNDERPLATED OVERALL.
- ELECTRICAL SPECIFICATION:
  - RATED CURRENT: 0.5A
  - CONTACT RESISTANCE: 30mΩ MAX(INITIAL). 50mΩ MAX (AFTER).
  - INSULATION RESISTANCE: 100MΩ MIN.
  - DIELECTRIC WITHSTANDING VOLTAGE: 500Volts AC
- MACHINERY SPECIFICATION:
  - MATING FORCE: 44.1N MAX. UNMATING FORCE: 9.8N MIN. (AFTER TEST: 4.9N MIN).
  - DURABILITY: 10000 CYCLES MIN.
- ENVIRONMENTAL SPECIFICATION:
  - OPERATING CONDITION: TEMPERATURE -40°C~+85°C; HUMIDITY 80% R.H MAX
  - SALT SPRAY: 24H
  - SOLDER ABILITY: 245±5°C, 5±0.5s
  - IR REFLOW: THE PEAK TEMPERATURE ON THE BOARD SHALL BE MAINTAINED FOR 10 SECONDS AT 260°C.

PART No.:

HM A 2 01 061 2 E1

HDMI  
HDMI Type A  
Female  
PLATING:  
01: G/F+MATTE TIN

Running Code  
PAKING:  
1: TRAY  
2: REEL  
SERIAL NO.

MILLIMETERS	INCH
X°±2°	X°±2°
.X±0.30	.XX±0.012
.XX±0.20	.XXX±0.008
.XXX±0.10	.XXXX±0.004



FOR YOUR  
VITAL CONNECTION

TITLE: HDMI 19PIN AF 正向沉板2.78 DIP TYPE

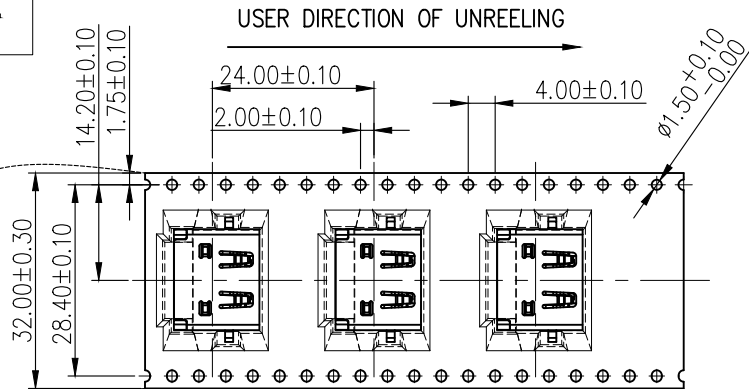
DRAWN BY: Zou Long PART NO: HMA2010612E1 REV: A0

CHECKED BY: Bob SIZE: A1 UNIT:mm SHEET:1 OF 2 FCN: E1

For technical support, please send an email to support@vitalconn.com APPROVED BY: QPF PROJECTION http://www.vitalconn.com

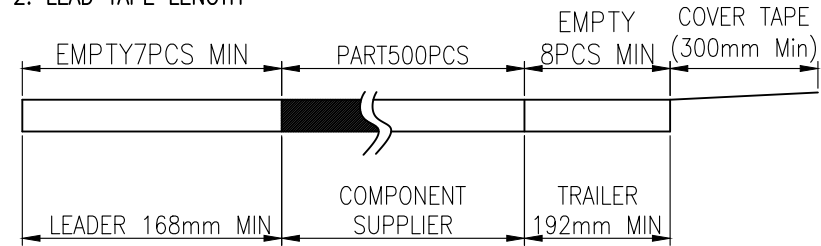


7	8		
REV:	ECN. NO.	NAME	DATE

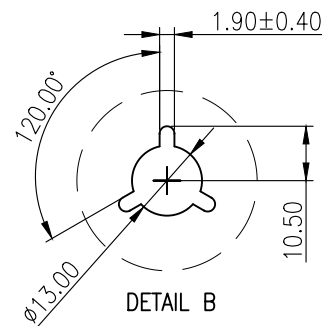
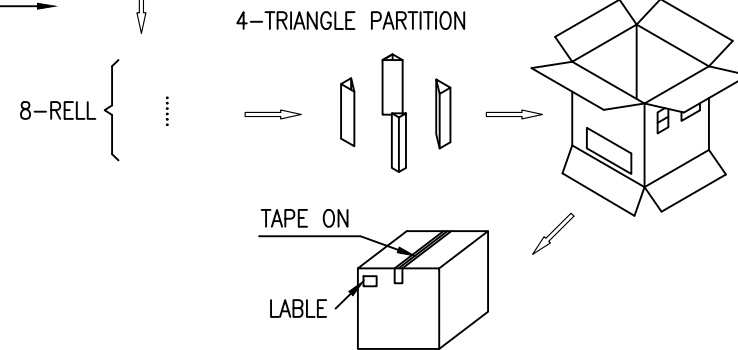
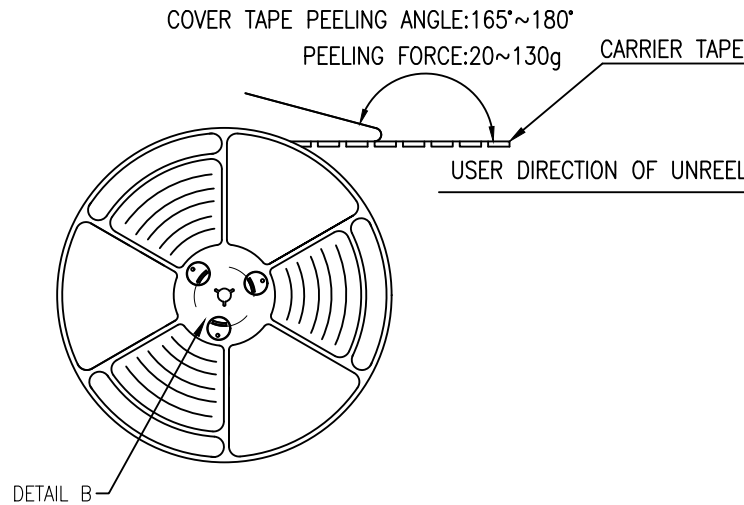


NOTES

1. NUMBER OF CONNECTORS: 425PCS/REEL
2. LEAD TAPE LENGTH



3. QUANTITY: 3400PCS/CARTON



MILLIMETERS	INCH	<b>VITALCON</b> a vital connector company		FOR YOUR VITAL CONNECTION	
X°±2°	X°±2°	TITLE: HDMI 19PIN AF 正向沉板2.78 DIP TYPE		REV: A0	
.X±0.30	.XX±0.012				
.XX±0.20	.XXX±0.008				
.XXX±0.10	.XXXX±0.004	PART NO: HMA2010612E1		SHEET: 2 OF 2	
DRAWN BY: Zou Long	CHECKED BY: Bob	SIZE: A1		UNIT:mm	
APPROVED BY: QPF	CHECKED BY: Bob	PROJECTION		FCN: E1	
For technical support, please send an email to support@vitalconn.com		PROJECTION		http://www.vitalconn.com	

For technical support, please send an email to support@vitalconn.com