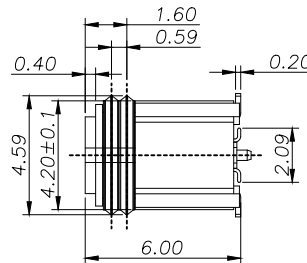
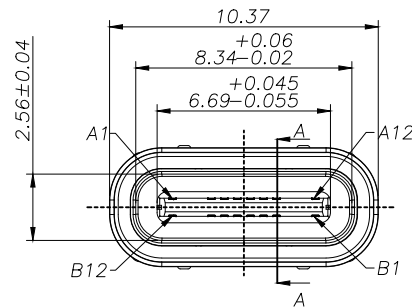
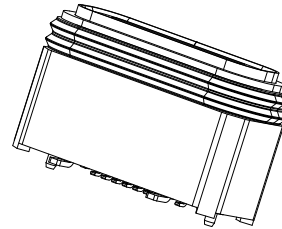
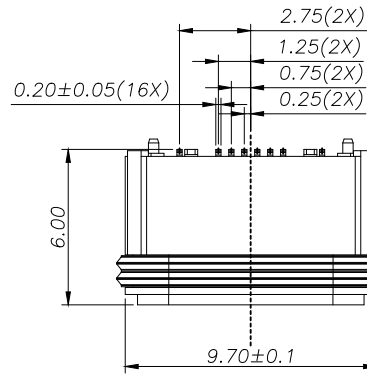
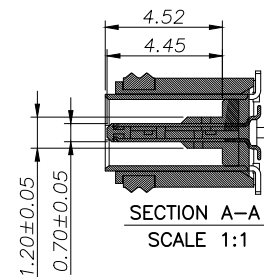
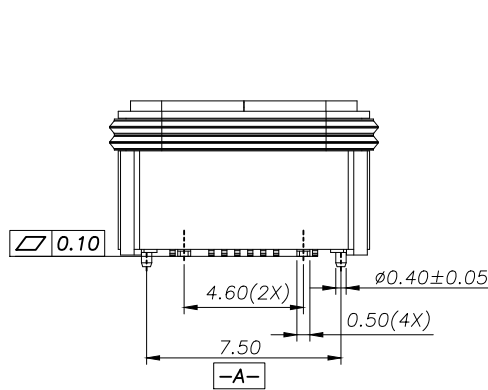
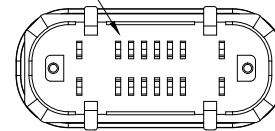




REV:	ECN. NO.	NAME	DATE
A0	-----	-----	04-03-2026



POSITION OF GLUE



NOTE:

1.MATERIAL SPECIFICATION:

- 1.HOUSING:HIGH TEMPERATURE RESISTANT PLASTIC
- 2.TERMINAL: COPPER ALLOY
- 3.MID PLATE: STAINLESS STEEL
- 4.FRONT SHELL: STAINLESS STEEL
- 5.O-RING: SILICA GEL, BLACK
- 6.GLUE:EPOXY,BLACK

2.PLATING SPECIFICATION:

- 2-1.TERMINAL:
Ni 50u" MIN. UNDER PLATED OVER ALL.
Au G/F PLATED ON THE CONTACT AREA
Au G/F PLATED ON THE SOLDER AREA

2-2. SHELL:

- Ni 50u" MIN. UNDER PLATED OVER ALL.

2-3.MID PLATE:

- CLEAR ONLY

3.MECHANICAL PERFORMANCE,

- 3-1.INSERTION FORCE: 0.5~2.0kgf.
- 3-2.REMOVAL FORCE: 0.8kgf~2.0kgf.
- 3-3.DURABILITY: 10000 CYCLES.

4.ELECTRICAL PERFORMANCE,

- 4-1. VOLTAGE RATING:5 V DC/AC (RMS. max)
CURRENT RATING:5 AMPS. FOR TOTAL VBUS/GND PINS;
- 4-2. LLCR:
VBUS & GND PINS AND OTHER PINS: 40mΩ/PIN MAX.
LLCR MAX. CHANGE OF ALL PINS: 10mΩ.
- 4-3.INSULATION RESISTANCE: 100MΩ MIN
- 4-4.DIELECTRIC WITHSTAND VOLTAGE,AC 100V FOR 1 MINUTE.

5. ENVIRONMENTAL PERFORMANCE:

- OPERATING TEMPERATURE: -25°C~+85°C.

6.IR REFLOW:

- THE PEAK TEMPERATURE ON THE BOARD SHALL BE MAINTAINED FOR 10 SECONDS AT 260°C.

7.WATERPROOF:IPX5

TOLERANCE

$\begin{matrix} \text{Y} \text{E} \text{A} \text{A} \text{E} \text{E} & \text{Y} \text{E} \text{A} \text{A} \text{E} \text{E} \\ \text{E} \text{Y} \text{A} \text{A} \text{E} \text{E} & \text{E} \text{Y} \text{A} \text{A} \text{E} \text{E} \\ \text{E} \text{Y} \text{A} \text{A} \text{E} \text{E} & \text{E} \text{Y} \text{A} \text{A} \text{E} \text{E} \end{matrix}$



FOR YOUR VITAL CONNECTION

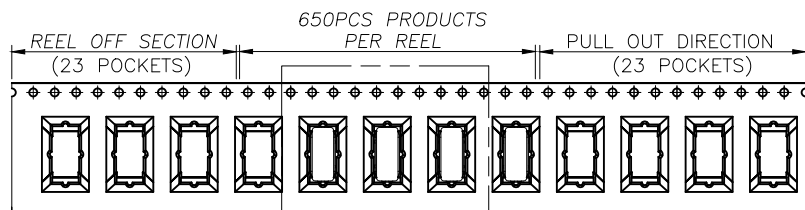
TITLE: USB TYPE C 16POS VERTIACL H=6.0MM IPX5

DRAWN BY:	Zou Long	PART NO:	UC-101566-22103-F9	SHEET:	1 OF 3	REV:	A0
CHECKED BY:	Bob	DWG NO:	D-UC-101620-22103-F9	SIZE:	A4	UNIT:	mm
APPROVED BY:	QPF	PROJECTION:		http://www.vitalconn.com			

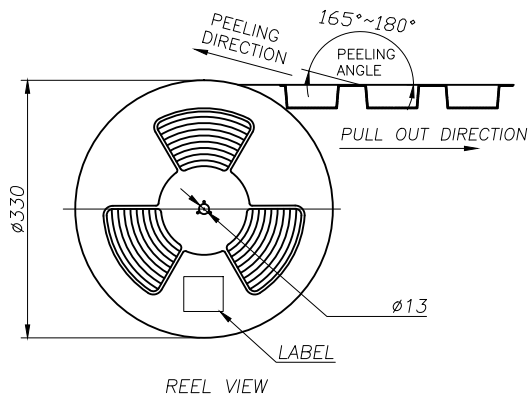
For technical support, please send an email to support@vitalconn.com



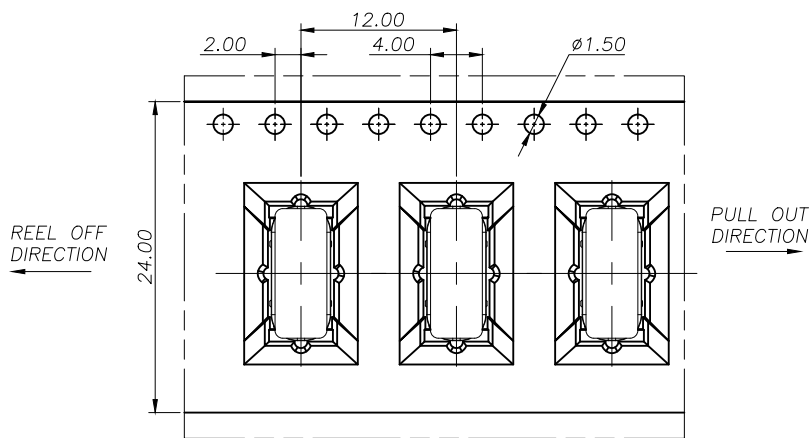
REV:	ECN. NO.	NAME	DATE
A0	-----	-----	04-03-2026



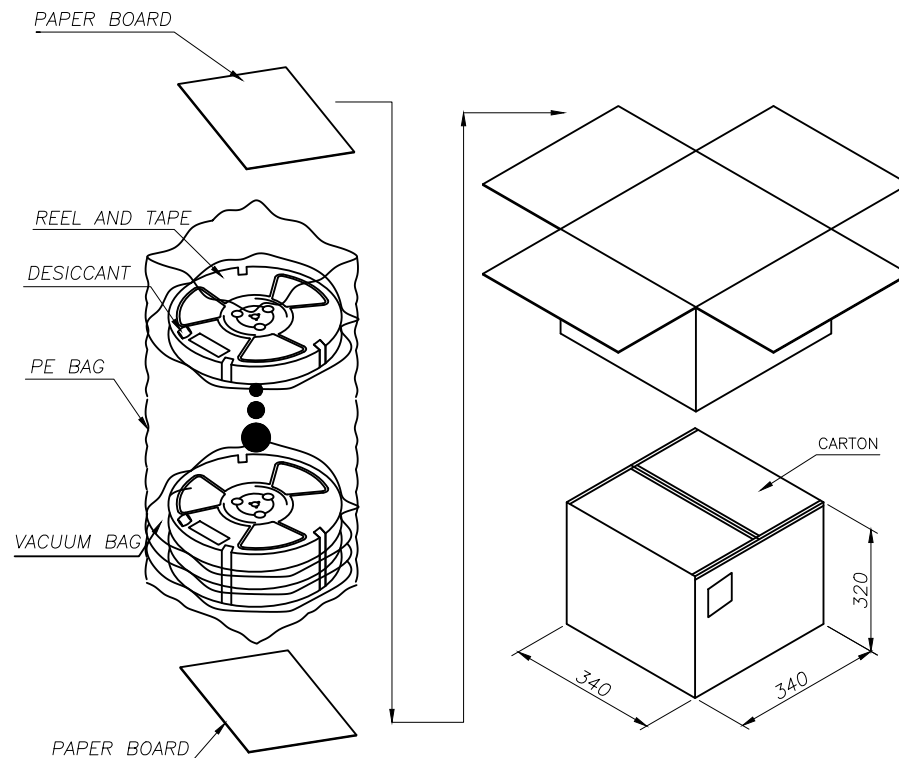
SEE DETAIL X



REEL VIEW



DETAIL X



	REEL/TRAY	CARTON
CONNECTOR (PCS)	650	6500

TOLERANCE

$\begin{matrix} \text{Y} & \text{E} & \text{M} & \text{M} & \text{E} & \text{E} \\ \text{E} & \text{Y} & \text{M} & \text{M} & \text{E} & \text{E} \\ \text{E} & \text{Y} & \text{A} & \text{E} & \text{E} & \end{matrix}$
 $\begin{matrix} \text{Y} & \text{E} & \text{M} & \text{M} & \text{E} & \text{E} \\ \text{E} & \text{Y} & \text{M} & \text{M} & \text{E} & \text{E} \\ \text{E} & \text{Y} & \text{A} & \text{E} & \text{E} & \end{matrix}$



FOR YOUR VITAL CONNECTION

TITLE: USB TYPE C 16POS VERTIACL H=6.0MM IPX5

DRAWN BY:	Zou Long	PART NO:	UC-101566-22103-F9	SHEET:	3 OF 3	REV:	A0
CHECKED BY:	Bob	DWG NO:	D-UC-101620-22103-F9	SIZE:	A4	UNIT:	mm
APPROVED BY:	QPF	PROJECTION:		http://www.vitalconn.com			

For technical support, please send an email to support@vitalconn.com