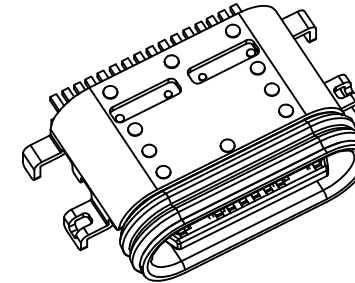
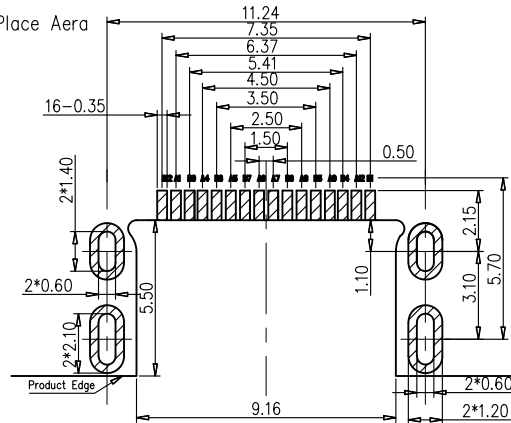
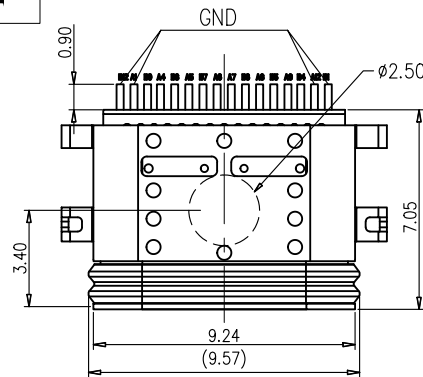
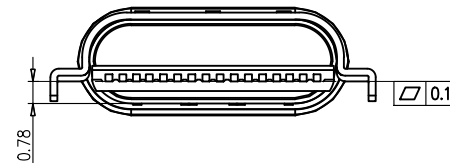
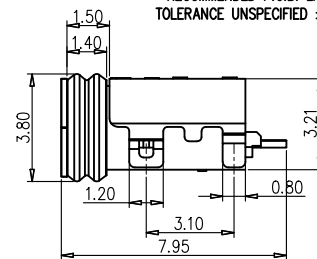
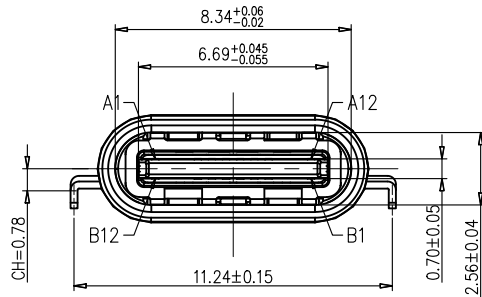




REV:	ECN. NO.	NAME	DATE
A0	----	-----	04-29-2026



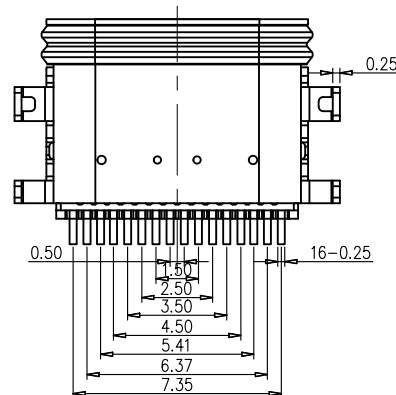
RECOMMENDED P.C.B. LAYOUT
TOLERANCE UNSPECIFIED ±0.05mm



NOTES:

- MATERIAL:
 - HOUSING: PA9T; COLOR: BLACK
 - TERMINAL: C2680
 - INNER SHELL: SUS304
 - OUT SHELL: SUS304
 - MID PLATE: SUS301
 - EMC PLATE: SUS304
 - SEALING : SILICON DIOXIDE
- FINISH:
 - TERMINAL: G/F PLATED ON CONTACT AREA; G/F PLATED ON SOLDER AREA; Ni 30u" MIN. UNDERPLATED OVERALL.
 - SHELL: Ni 30u" MIN. PLATED OVERALL
 - MID PLATE: CLEANING.
- ELECTRICAL SPECIFICATION:
 - RATED CURRENT: VBUS AND GND PIN 3.0A; Other pin 0.25A
 - CONTACT RESISTANCE: 40mΩ MAX(INITIAL), 50mΩ MAX (AFTER).
 - INSULATION RESISTANCE: 100MΩ MIN.
 - DIELECTRIC WITHSTANDING VOLTAGE: 100V ACR.M.S.
- MACHINERY SPECIFICATION:
 - MATING FORCE: 5N~20N. UNMATING FORCE: 8N~20N. (AFTER TEST:6N~20N).
 - DURABILITY: 10000 CYCLES MIN.
- ENVIRONMENTAL SPECIFICATION
 - OPERATING CONDITION: TEMPERATURE -40°C~+85°C; HUMIDITY 80% R.H MAX
 - SALT SPRAY: 24H
 - SOLDER ABILITY: 245±5°C, 5±0.5s
 - IR REFLOW: THE PEAK TEMPERATURE ON THE BOARD SHALL BE MAINTAINED FOR 10 SECONDS AT 260°C.

A1	GND	B12	GND
A4	VBUS	B9	VBUS
A5	CC1	B8	SBU2
A6	DP1	B7	DN2
A7	DN1	B6	DP2
A8	SBU1	B5	CC2
A9	VBUS	B4	VBUS
A12	GND	B1	GND
PIN	SIGNAL NAME	PIN	SIGNAL NAME



MILLIMETERS	INCH
X.° ±2°	X.° ±2°
.X ±0.30	.X ±0.012
.XX ±0.20	.XX ±0.008
.XXX ±0.10	.XXX ±0.004



FOR YOUR
VITAL CONNECTION

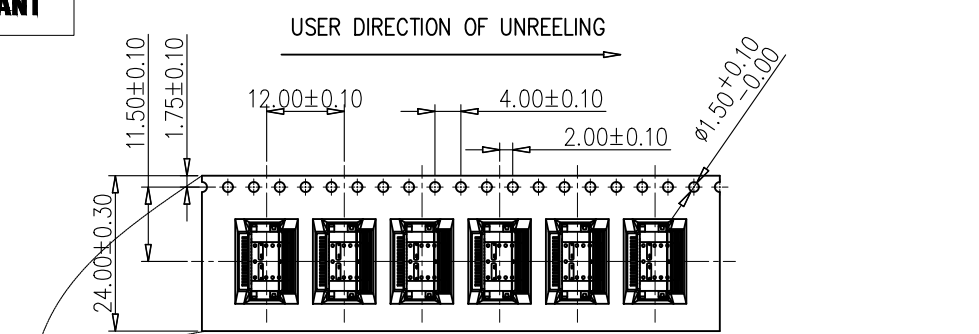
TITLE: TYPE C 16PIN 沉板0.78 L7.05 IPX5

DRAWN BY:	Zou Long	PART NO:	UC3114302E1	SHEET:	1 OF 2	REV:	A0
CHECKED BY:	Bob	DWG NO:	VTC-TZ-00146	SIZE:	A4	UNIT:	mm
APPROVED BY:	QPF	PROJECTION:		http://www.vitalconn.com			

For technical support, please send an email to support@vitalconn.com

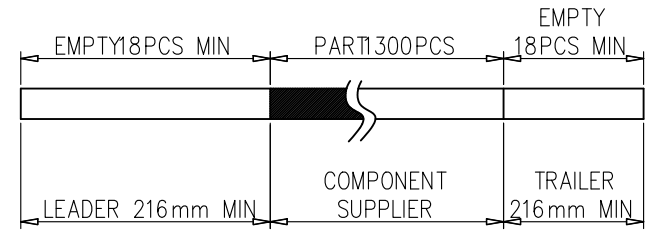


REV:	ECN. NO.	NAME	DATE
A0	-----	-----	04-29-2026

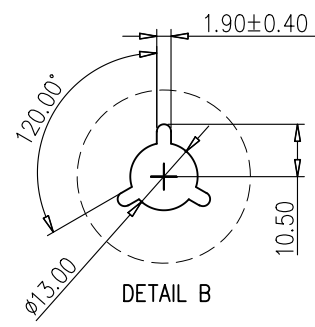
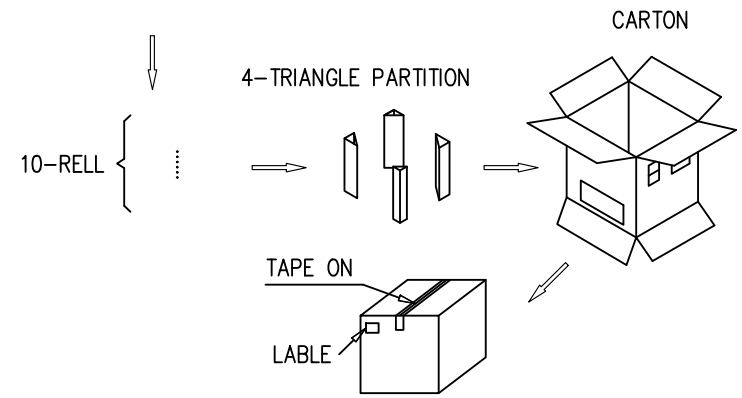
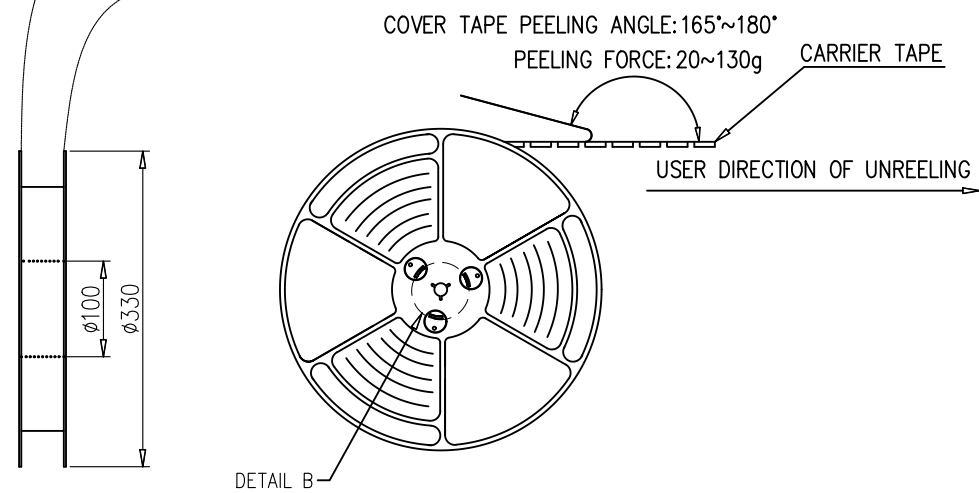


NOTES

1. NUMBER OF CONNECTORS: 1300PCS/REEL
2. LEAD TAPE LENGTH



3. QUANTITY: 13000PCS/CARTON



MILLIMETERS	INCH
X.° ±2°	X.° ±2°
.X ±0.30	.X ±0.012
.XX ±0.20	.XX ±0.008
.XXX ±0.10	.XXX ±0.004



FOR YOUR VITAL CONNECTION

TITLE:	TYPE C 16PIN 沉板 0.78 L7.05 IPX5								
DRAWN BY:	Zou Long	PART NO:	UC3114302E1	SHEET:	2 OF 2	REV:	A0		
CHECKED BY:	Bob	DWG NO:	VTC-TZ-00146	SIZE:	A4	UNIT:	mm	FCN:	E1
APPROVED BY:	QPF	PROJECTION:		http://www.vitalconn.com					

For technical support, please send an email to support@vitalconn.com